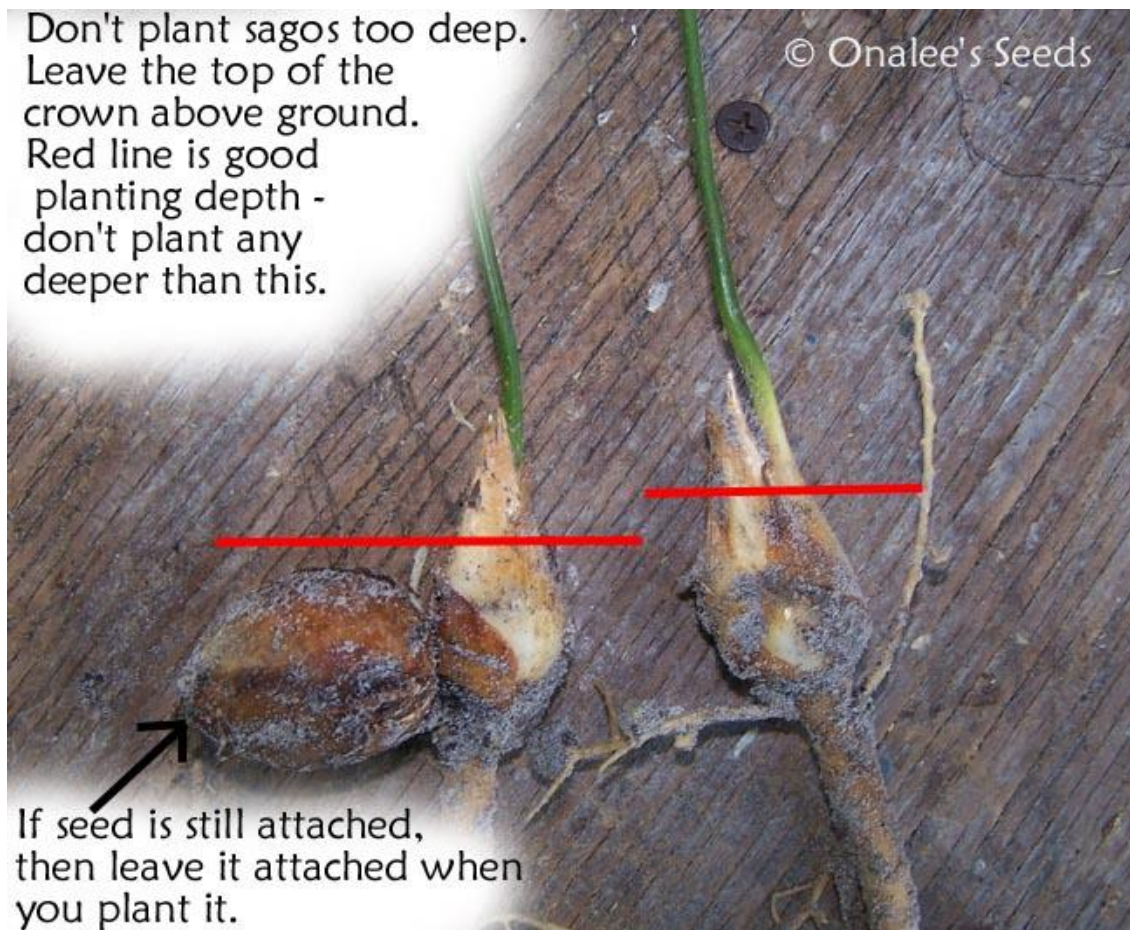


## GROWING SAGO PALMS

When planting or transplanting sagos, you may plant them in containers or directly in the ground. If planting in containers, use well draining soil and containers with lots of drainage. Allow top 1" of soil to dry between waterings. Never let water stand or soil stay damp.

Plant at original soil line; don't plant too deep or cover the stem of the leaves. The 'crown' that the leaves emerge from should be about half in ground and half above the soil line.



TEMPERATURE RANGE is from 15°F to 110°F (-11° to 42° C). Temperatures in the high teens may frost-damage leaves which may turn yellow or brown. Remove these to reduce stress on the plant and encourage new leaves in the spring. If temperatures fall below 15°F, the sago may die, however, as long as the trunk and leaf crown is hard wood, it should recover. If the trunk turns soft, your sago may be damaged beyond recovery.

HUMIDITY range is from dry to wet.

LIGHT: Sagos grow in full sun, partial shade or an indoor area which receives bright light or a few hours of morning or afternoon sun.

RATE OF GROWTH is extremely slow.

LONGEVITY: *Cycas revoluta* are extremely long lived.

FERTILIZER / WATER: It is best to UNDER WATER and UNDER FERTILIZE your Sago palms. I fertilize LIGHTLY in the spring with a 6-2-0 (millorganite) fertilizer.

FERTILIZER is generally applied during spring and late summer. Sagos growing in partial sun should receive an average rate as listed on the container, those in low light should receive only 1/4 rate. Too little plant food is far better than too much. If organic or slow release fertilizer is used, do not allow any to fall into the plant crown which is protecting the formation of future leaves.

OLD LEAVES MAY TURN YELLOW from over watering or too much fertilizer.

NEW LEAVES MAY TURN YELLOW from excess fertilizer or poor soil conditions.

Note: Once leaves turn yellow or brown, they should be removed from the plant.

If growing in a pot, allow soil to dry before watering again.